

Liv i kyrkan / Life in the Church

Lee Dallas & Tom O'Dell presenting

for the research team including:

Lizette Gradén, Henrik Lindblad, Anna Wahlöö



The Project is part of a Thematic Collaborative Initiative:
Heritage on the Move in the Name of Democracy

Financed by Lund University's Vice Chancellor's Office



Lund's Diocese

Over 550 churches and church buildings.

Most are closed or only open periodically.

What should be done with the cultural heritage of the Church of Sweden?



Church Closed

Cultural Heritage: What is it?

UNESCO 1952 Focuses on monuments, buildings and material culture.

And it states cultural heritage is:

“Imbued with a *message from the past*, the historic monuments of generations of people remain to the present day as living witnesses of their *age-old traditions*”
(International Charter of Venice 1964)



Cultural Heritage: What is it?

1972: "Natural Heritage"

Nature is ascribed a value from a cultural heritage perspective.



Cultural Heritage: What is it?

1994: "ICH"

Intangible Cultural Heritage

Immaterial culture is acknowledged as being of value as a form of cultural heritage.



We are engaged with 3 churches.

One built in 1887, has just been re-opened. Ignaberga ny Church



But it sits a few hundred meters from is 12th century forebearer...

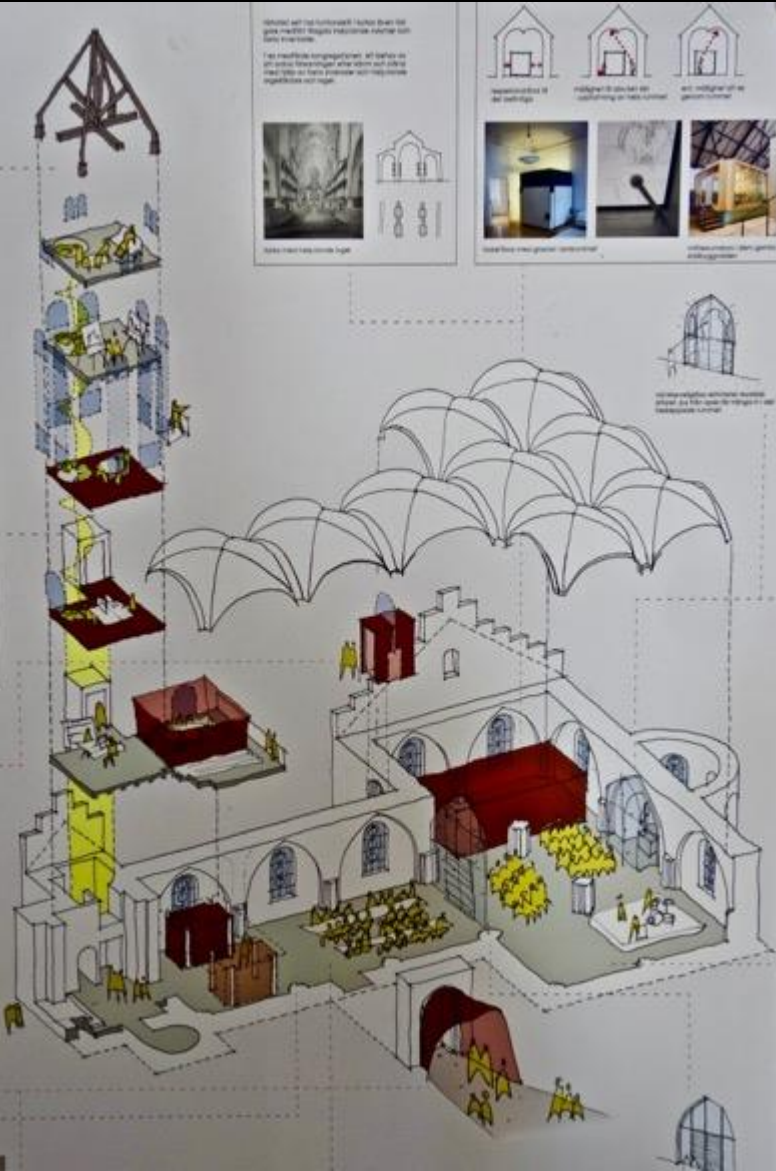
We are engaged with 3 churches.

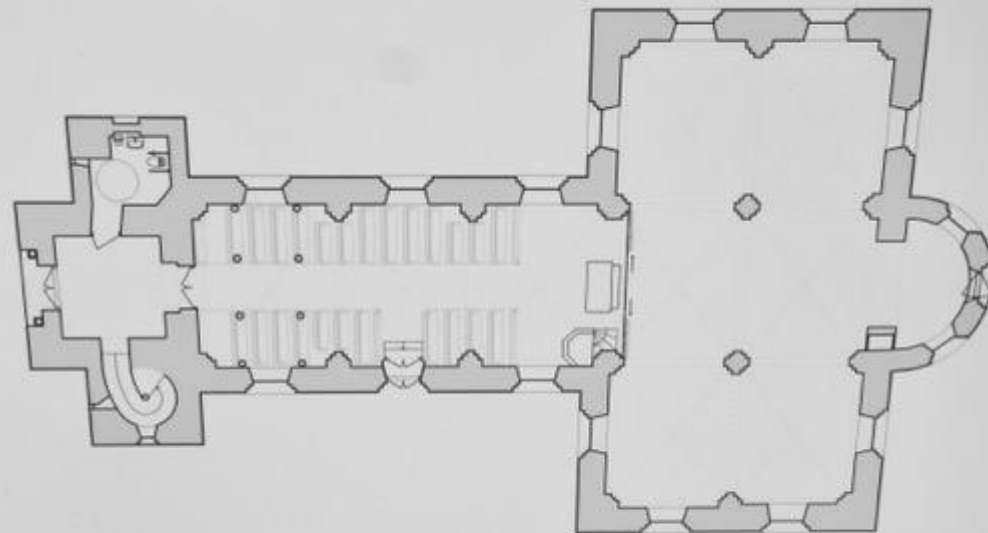
One is hoped to be a cultural church. Östra Nöbbelöv Church



But it lacks a floor, space for the preparation of food, and limited WC facilities.

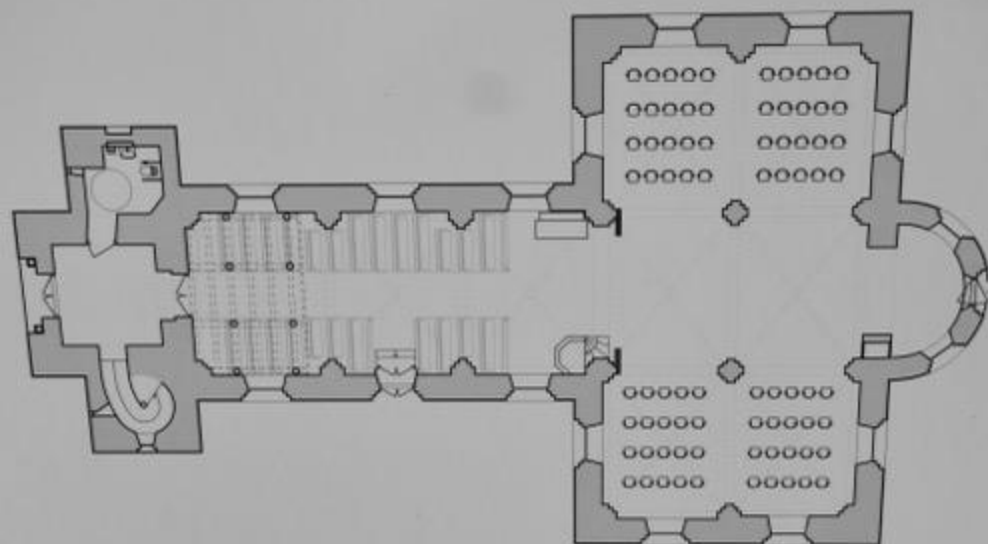
A church... A cultural church... a meeting place





Möbleringsförslag till gudstjänst

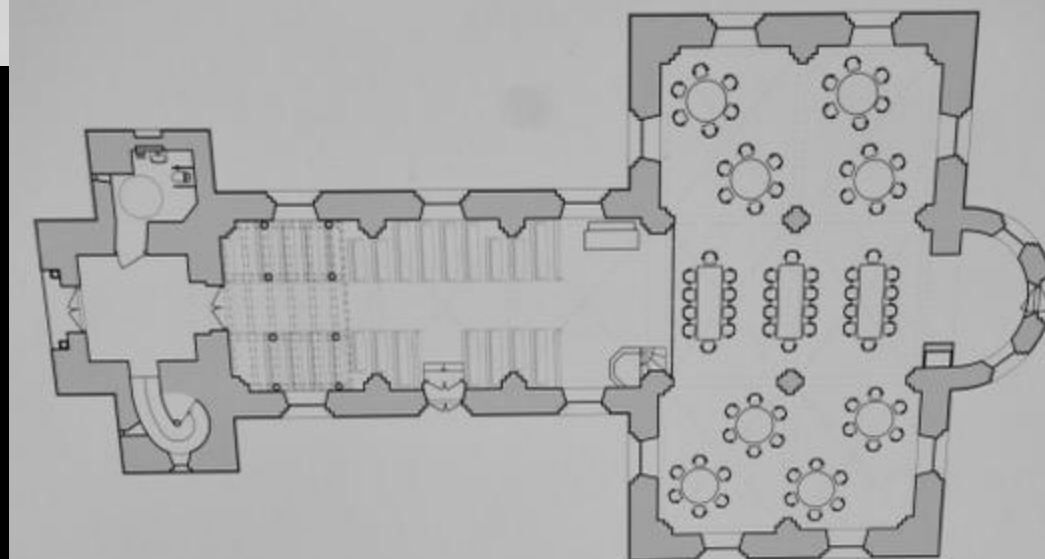
Altartavlan är placerad längst fram i mitten
Glasväggen är stängd



Plan 1:200

Möbleringsförslag till konsert

Hela kyrkorummet används
Korsarmarna möbleras med lösa stolar
Glasväggen är helt öppen
Altartavlan är rullad till sidan



Plan 1:200

Möbleringsförslag till festmiddag

Korsarmarna möbleras med lösa bord och stolar
Glasväggen är stängd
Den östra ingången används som huvudingång

We are engaged with 3 churches.

One is desacralized: Odarslöv Church







Odarslöv

Stångby IP

Stångby

Svenstorp

Igelösa

Östra Odarslöv

European Spallation Source ERIC

ANNEHEM

MAX IV Laboratory

Hobykrok B&B

Linnebjerg



